



CENTRAL PARK

r e s i d e n c e c l u b

TORRE 2 - CHELSEA

rua paran, 196 - poços de caldas - mg

CONHEÇA A TORRE 2 - CHELSEA

 Torre 1 - Brooklyn

 Torre 2 - Chelsea

 Torre 3 - Soho



IMPLANTAÇÃO DAS 3 TORRES



LIVING FINAL 6

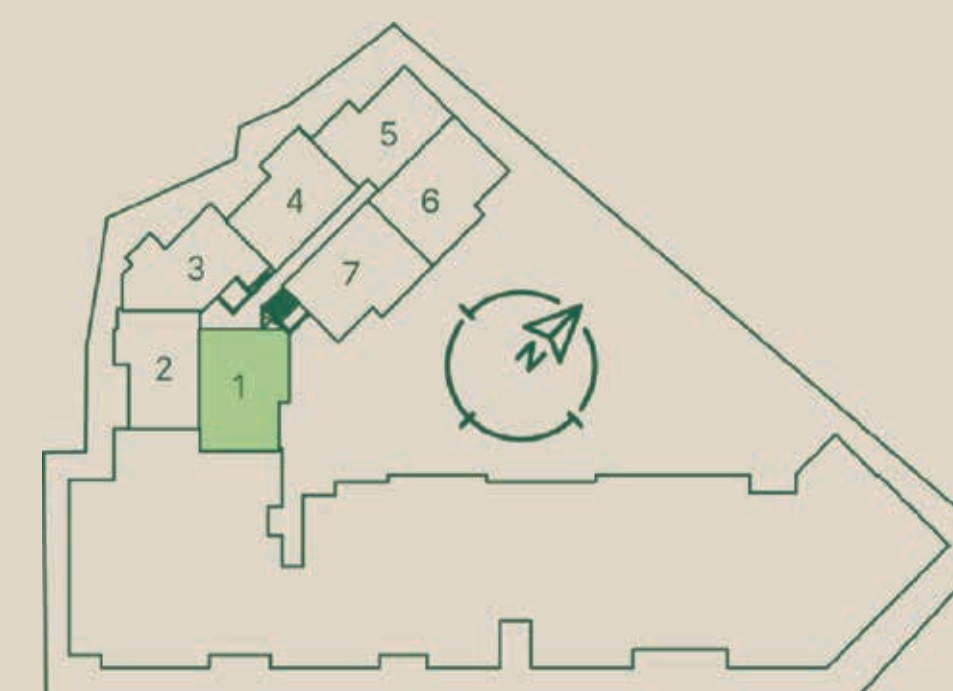
perspectiva ilustrada do living final 6



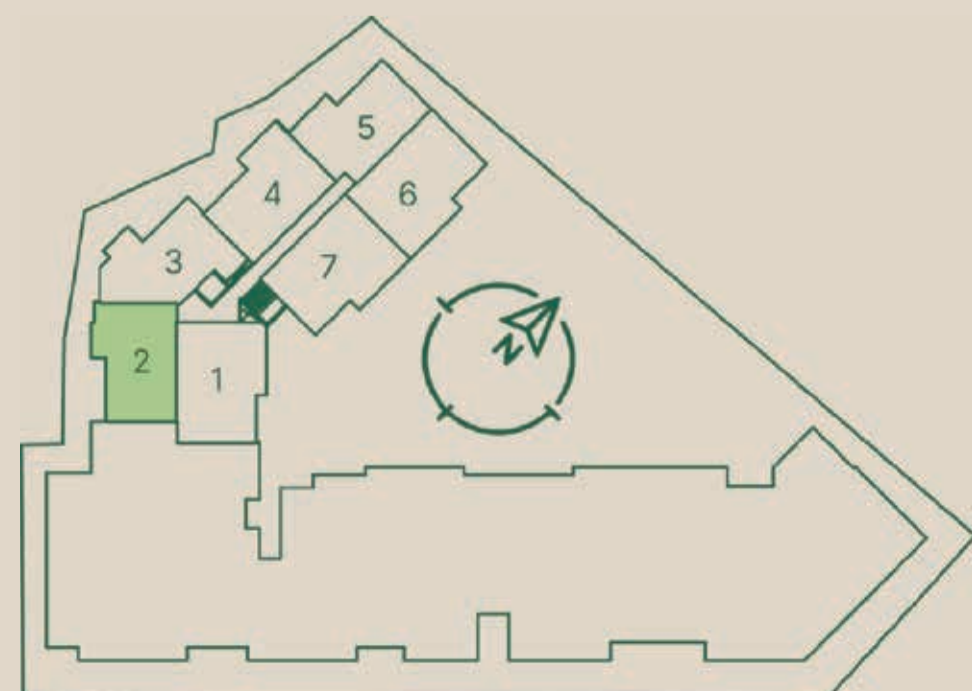
TERRAÇO FINAL 6

perspectiva ilustrada do terraço final 6

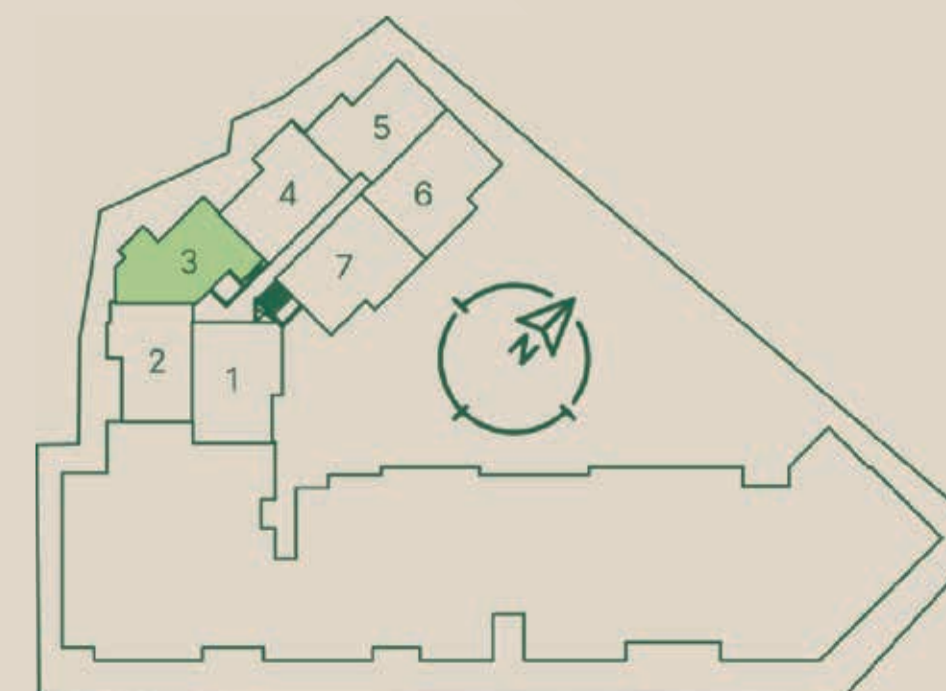
FINAL 1 - 79,60M²



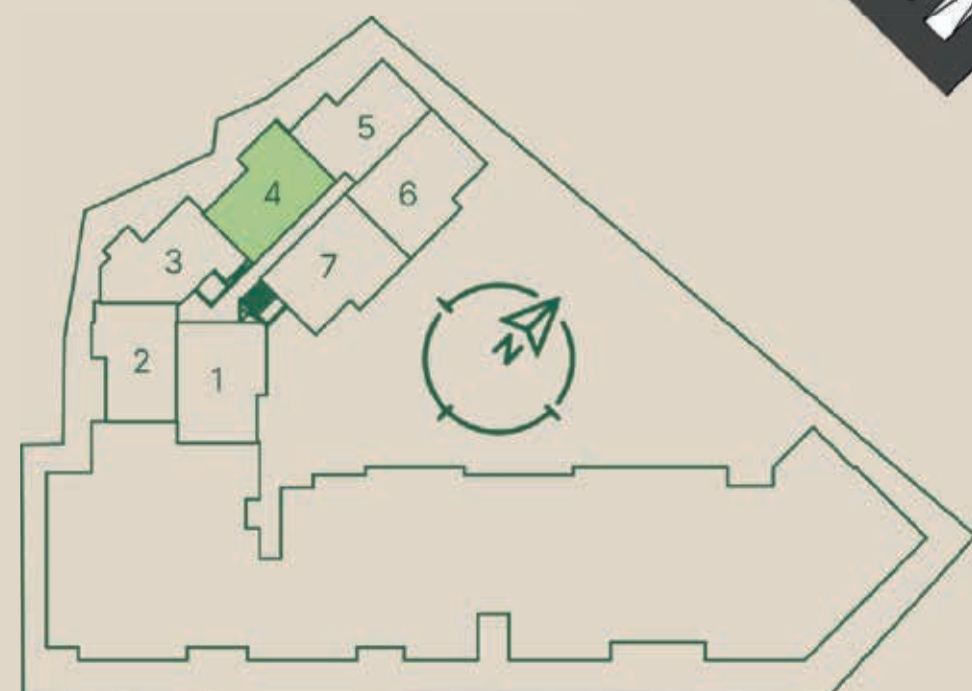
FINAL 2 - 68,50M²



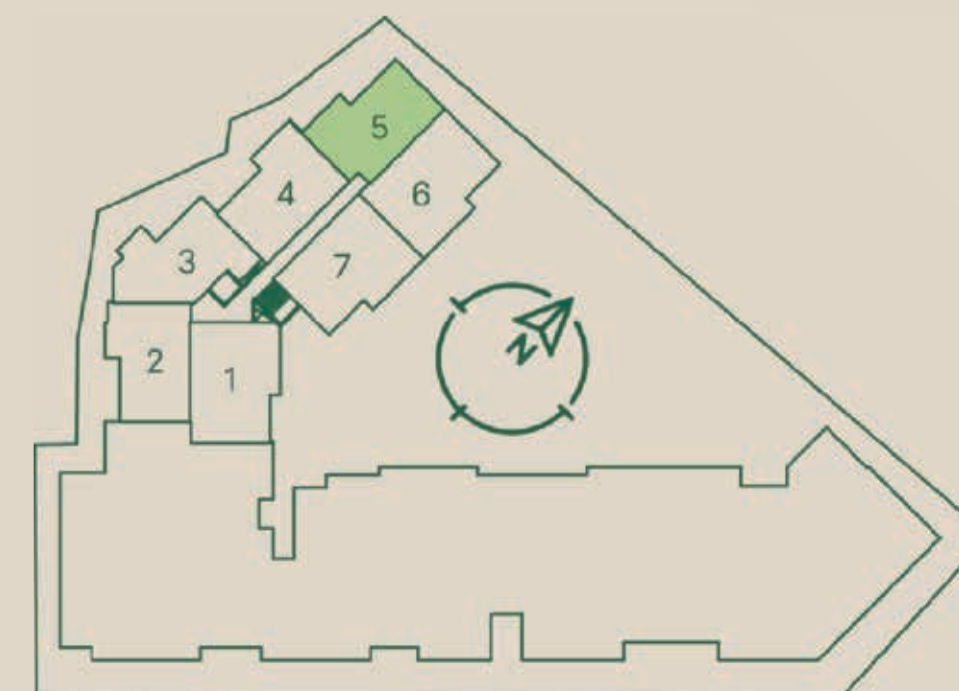
FINAL 3 - 71,80M²



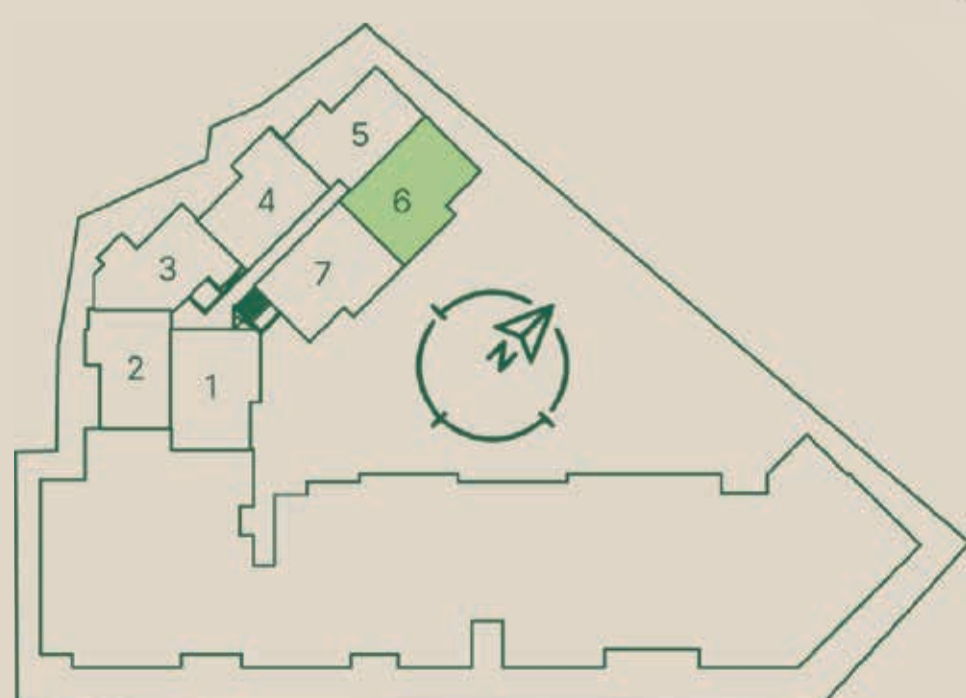
FINAL 4 - 69,35M²



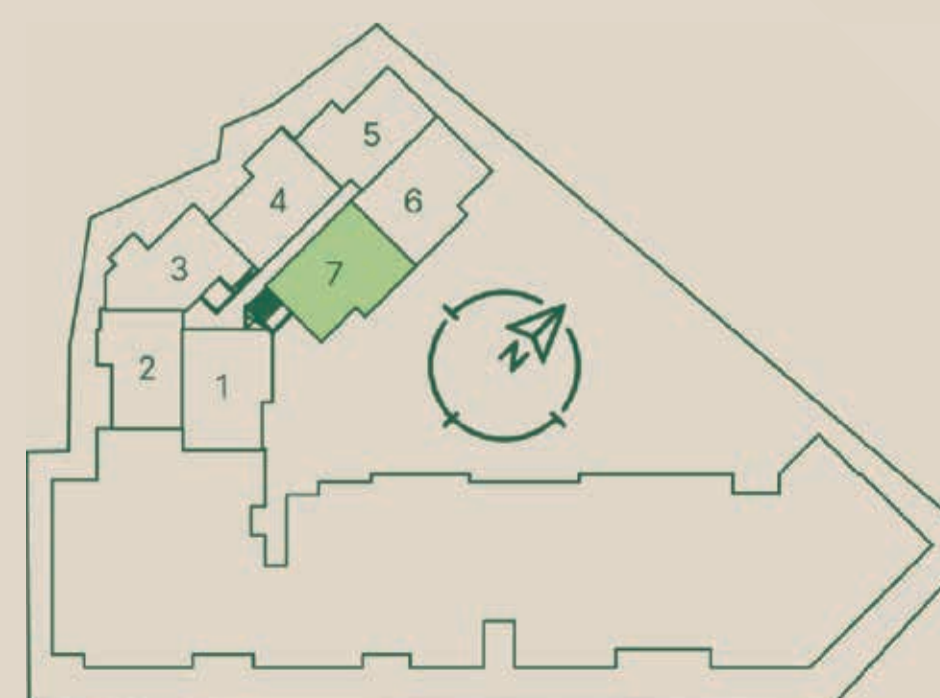
FINAL 5 - 67,25M²



FINAL 6 - 78,70M²



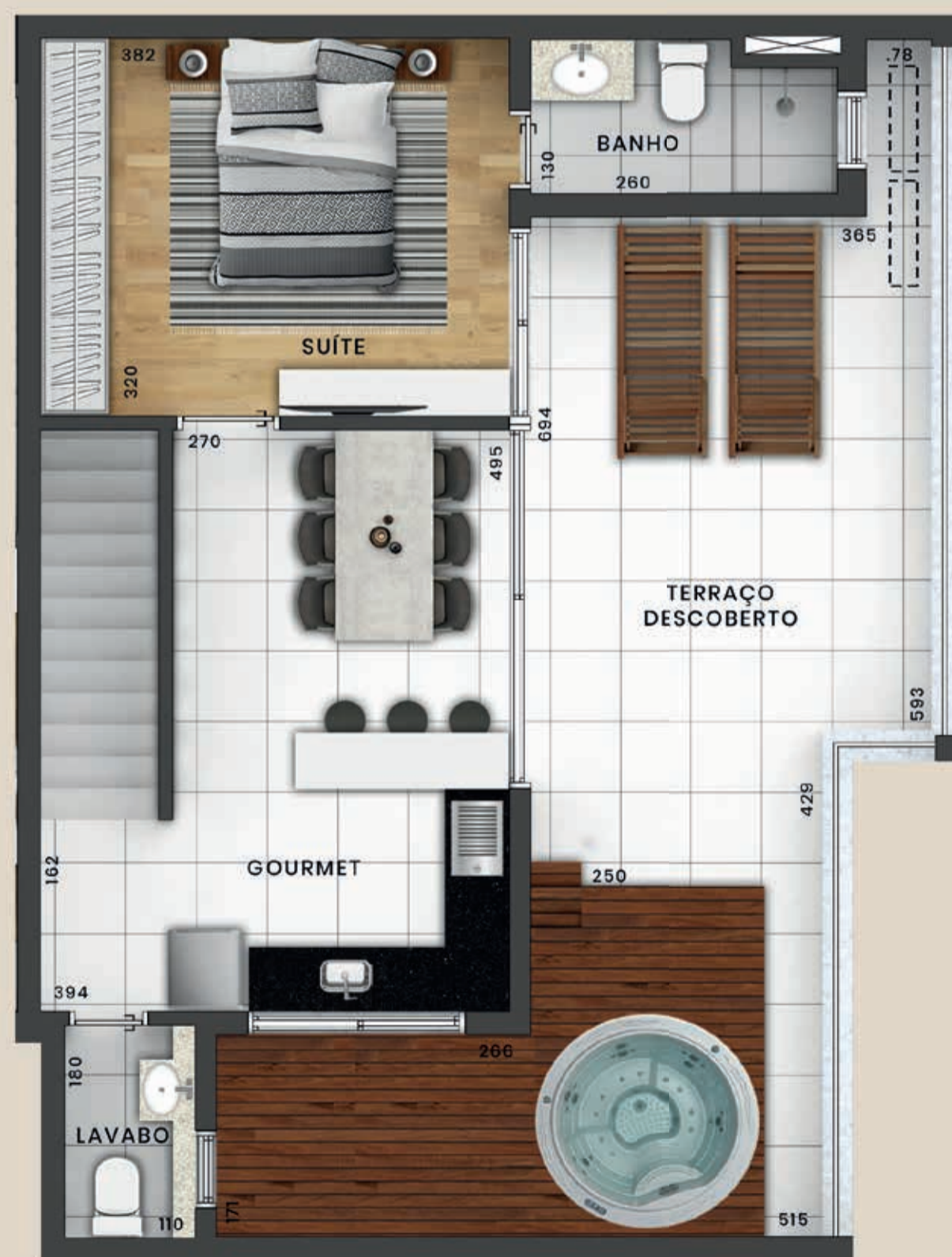
FINAL 7 - 79,70M²



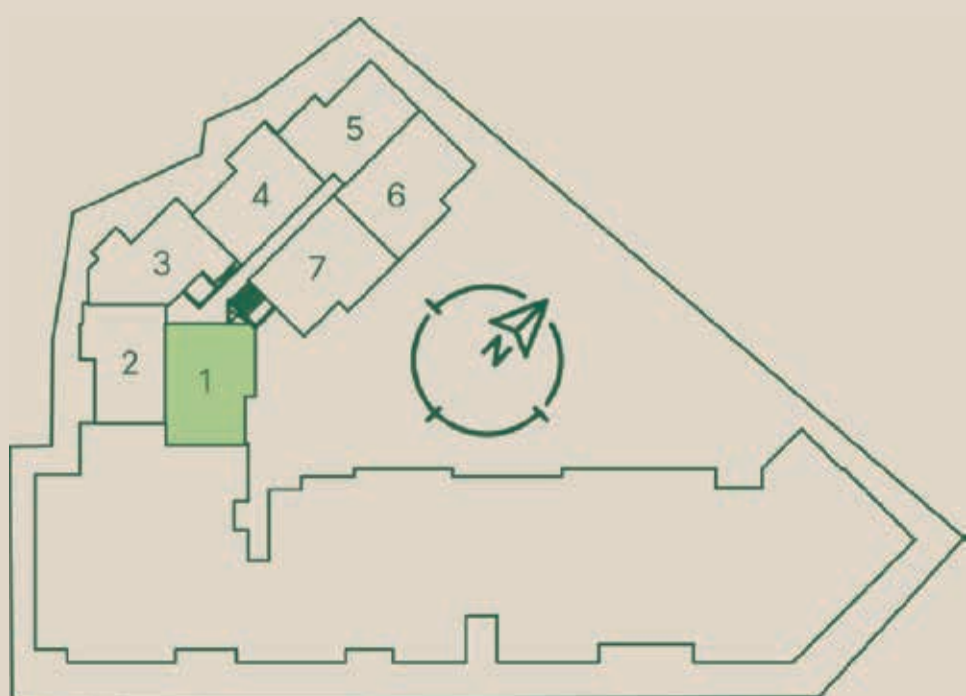
DUPLEX FINAL 1 - 155,50M²



DUPLEX INFERIOR



DUPLEX SUPERIOR



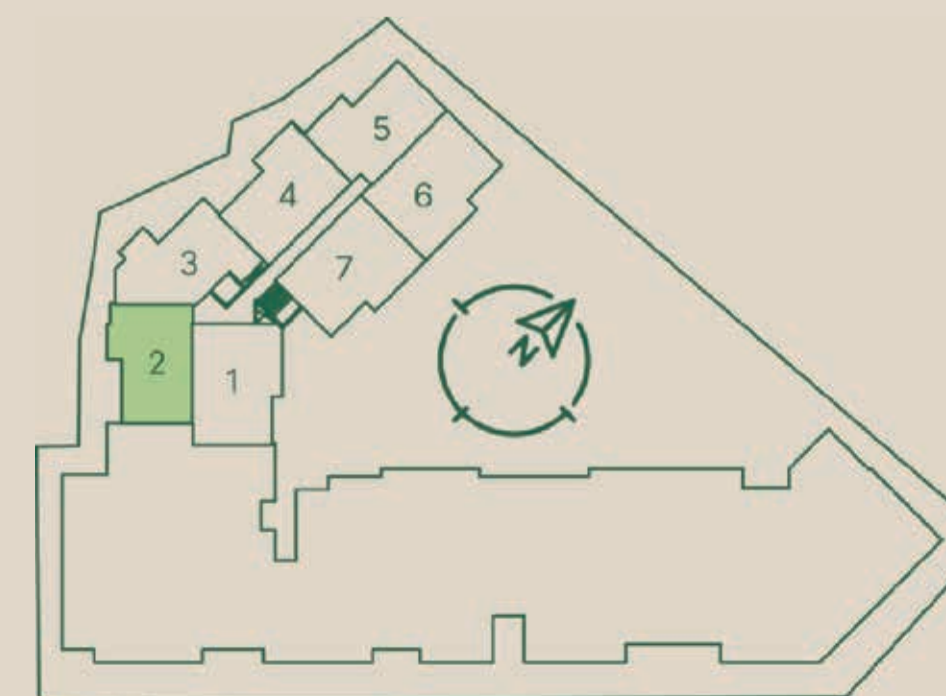
DUPLEX FINAL 2 - 131,25M²



DUPLEX INFERIOR



DUPLEX SUPERIOR



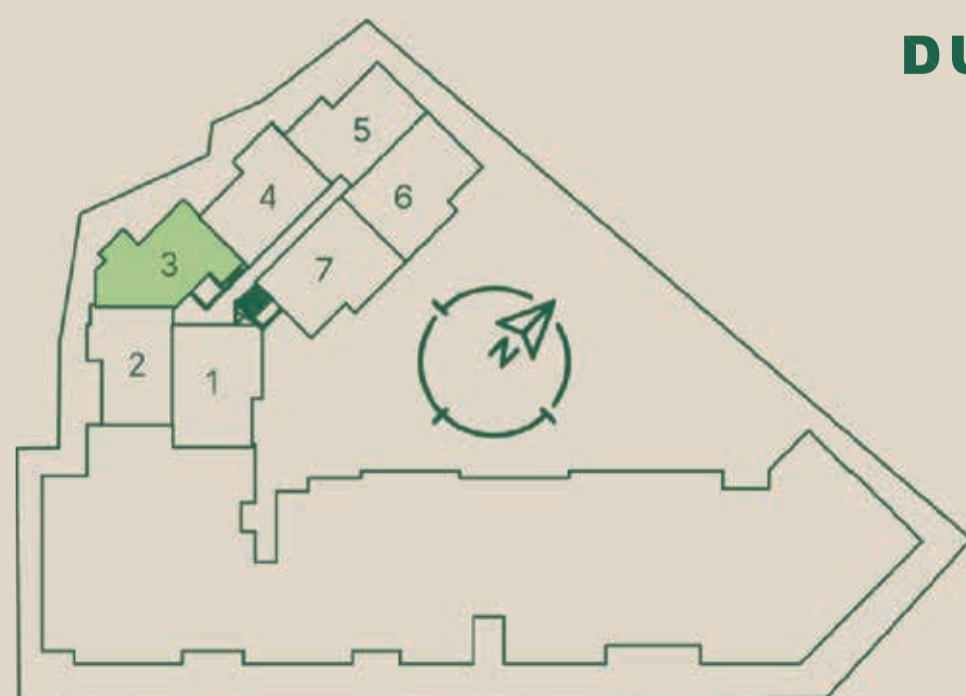
DUPLEX FINAL 3 - 136,50M²



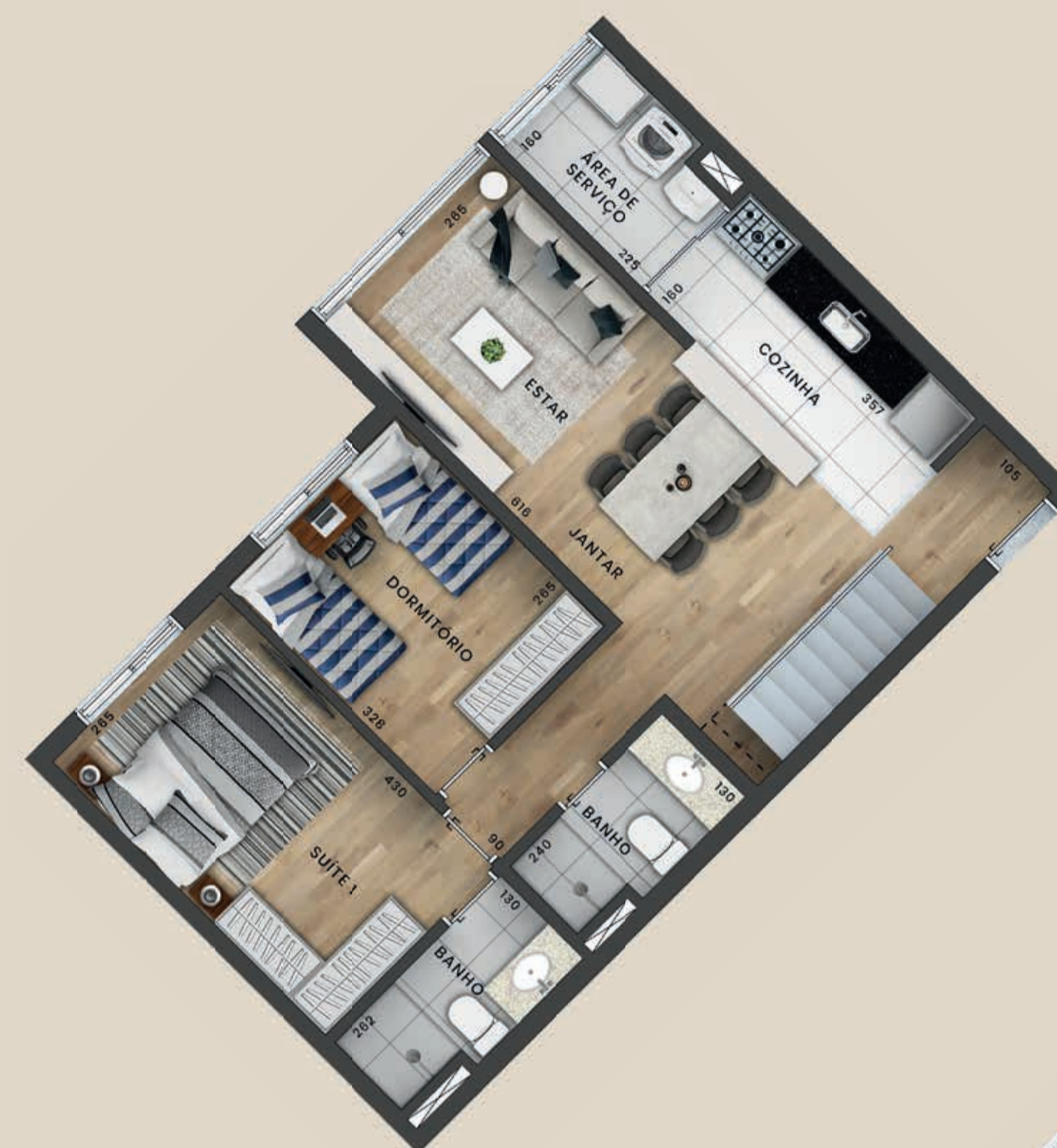
DUPLEX INFERIOR



DUPLEX SUPERIOR



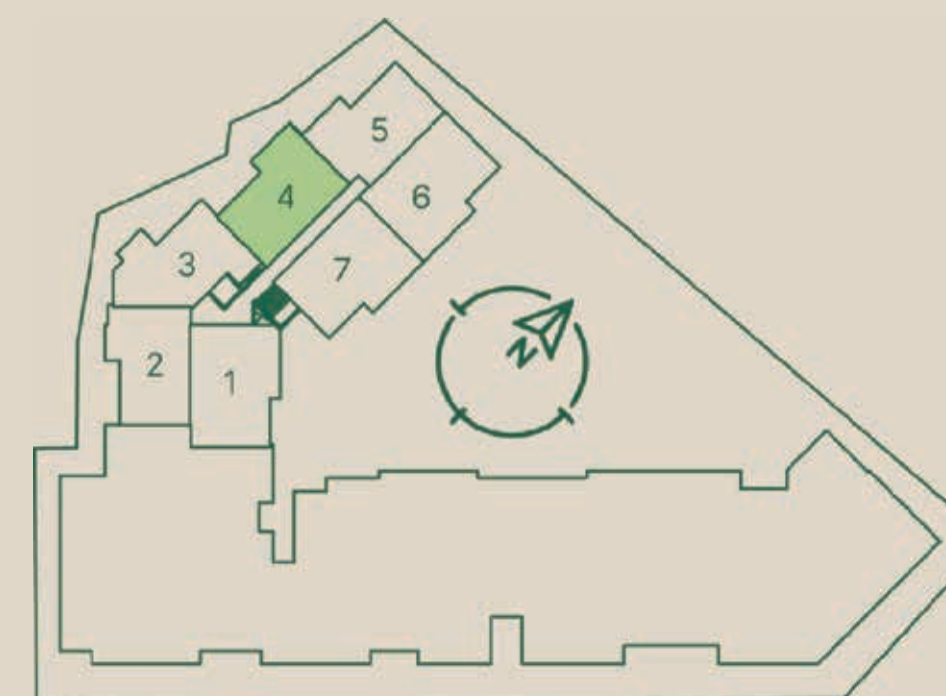
DUPLEX FINAL 4 - 131,75M²



DUPLEX INFERIOR



DUPLEX SUPERIOR



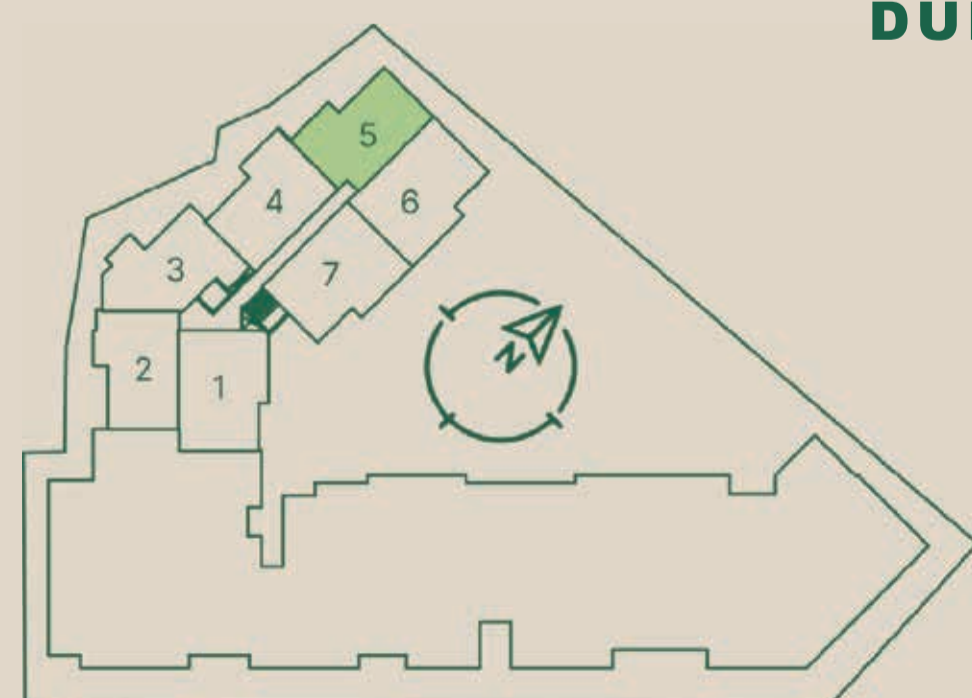
DUPLEX FINAL 5 - 130,20M²



DUPLEX INFERIOR



DUPLEX SUPERIOR



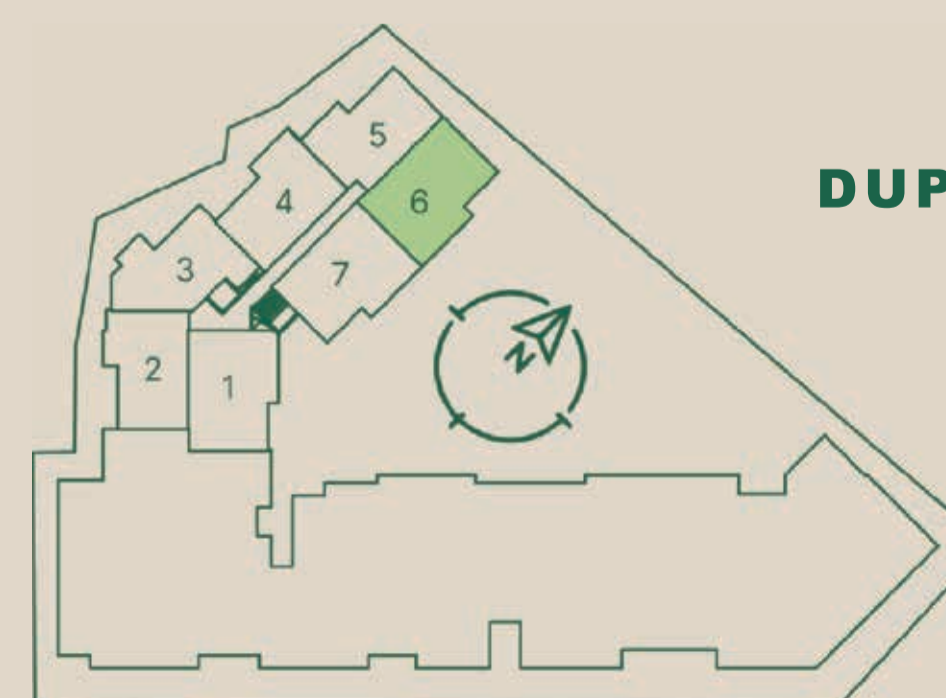
DUPLEX FINAL 6 - 154,80M²



DUPLEX INFERIOR



DUPLEX SUPERIOR



DUPLEX FINAL 7 - 155,90M²



DUPLEX INFERIOR

DUPLEX SUPERIOR



DUPLEX LIVING FINAL 6

perspectiva ilustrada do duplex living final 6



TERAÇO DUPLEX FINAL 6

perspectiva ilustrada do terraço duplex final 6

incorporação e construção

MUNIZ
INCORPORADORA

www.munizincorporadora.com.br

”As perspectivas e plantas são ilustrativas e possuem sugestão de decoração. Os móveis e utensílios são de dimensões comerciais e não fazem parte do contrato. Projeto aprovado pela SEPLAN da prefeitura de Poços de Caldas- MG em 22/03/2022. Alvará N° 161/2022 sob protocolo N° 0067258-048/2021 .Engenheiro responsável pela obra: Paulo Henrique Muniz Silva, CREA: 176435/D, ART N°: 20210003171. O empreendimento só será comercializado após o registro do memorial de incorporação junto ao cartório competente.”