



CENTRAL PARK

r e s i d e n c e c l u b

TORRE 3 - SOHO

rua paran, 196 - poços de caldas - mg

CONHEÇA A TORRE 3 - SOHO

-  Torre 1 - Brooklyn
-  Torre 2 - Chelsea
-  Torre 3 - Soho

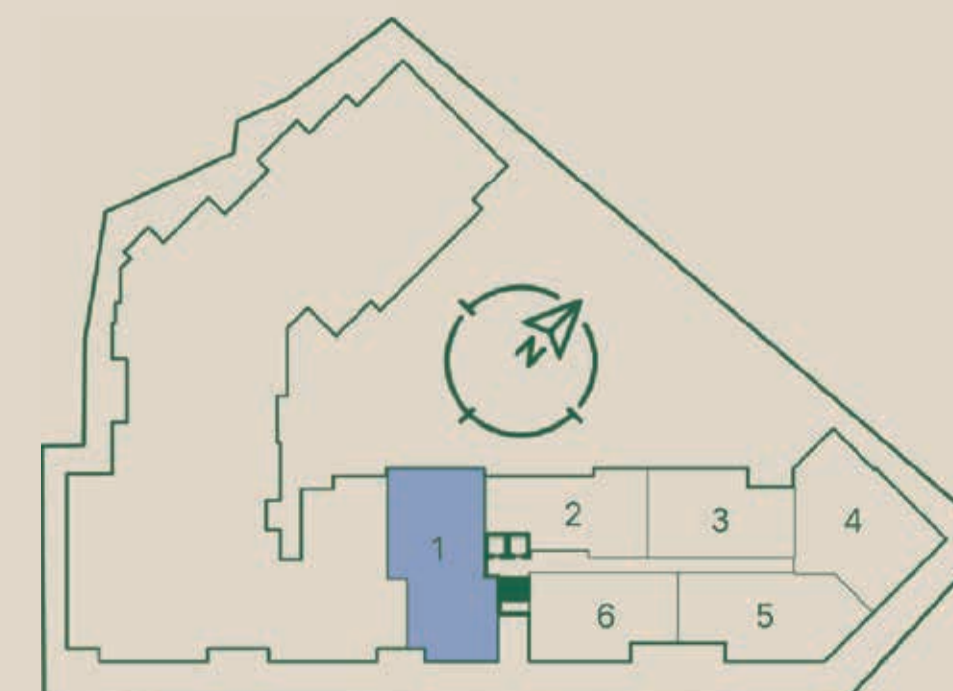


Rua Paraná

IMPLANTAÇÃO DAS 3 TORRES

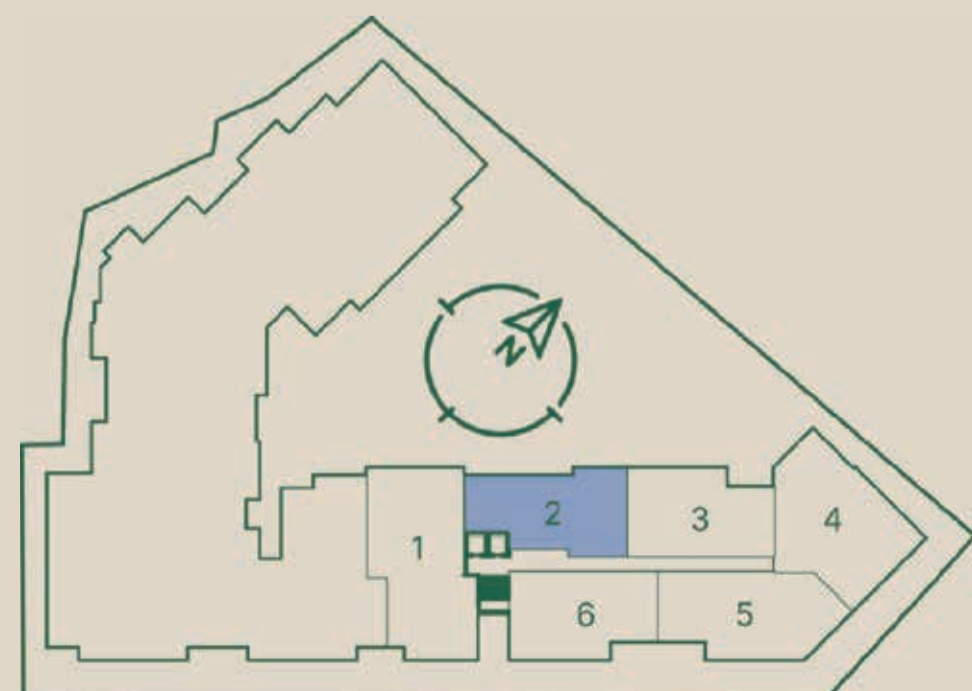


FINAL 1 - 136,50M²



CENTRAL PARK
residence club

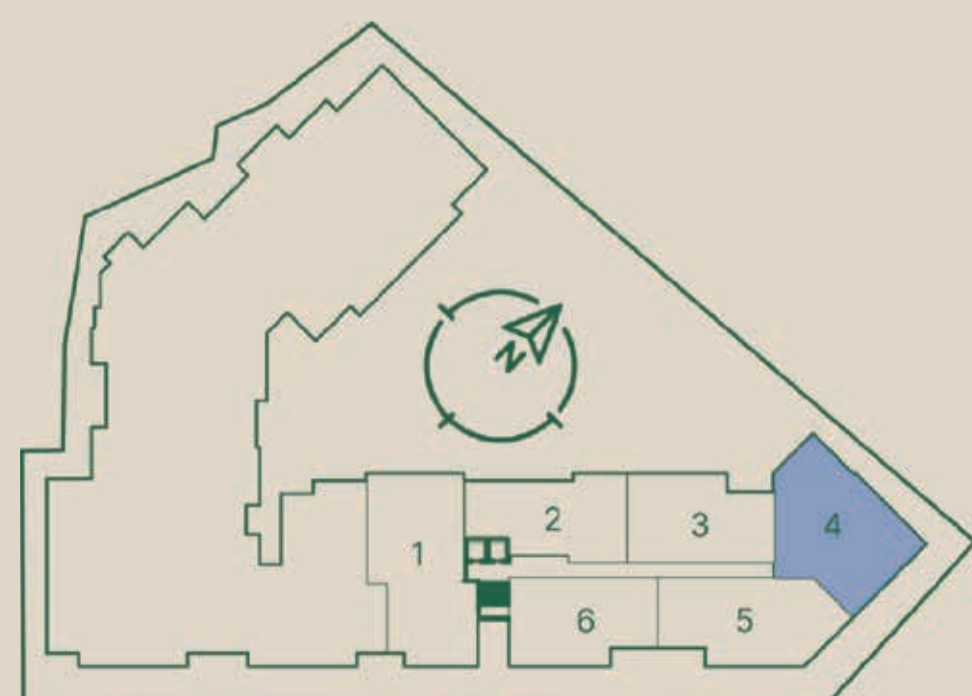
FINAL 2 - 92,60M²



FINAL 3 - 92,95M²



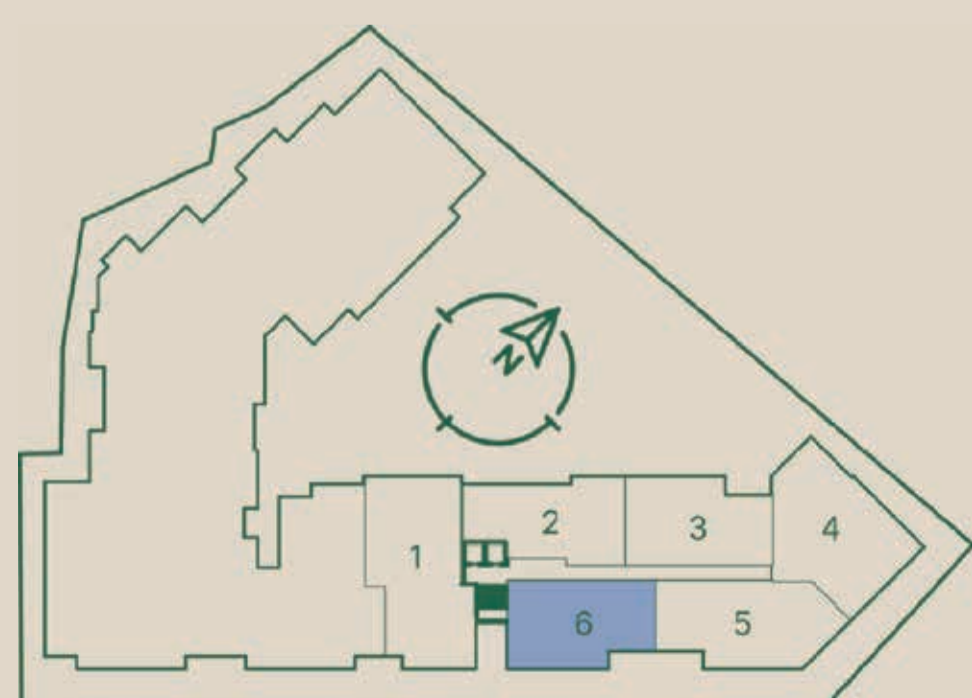
FINAL 4 - 121,70M²



FINAL 5 - 110M²



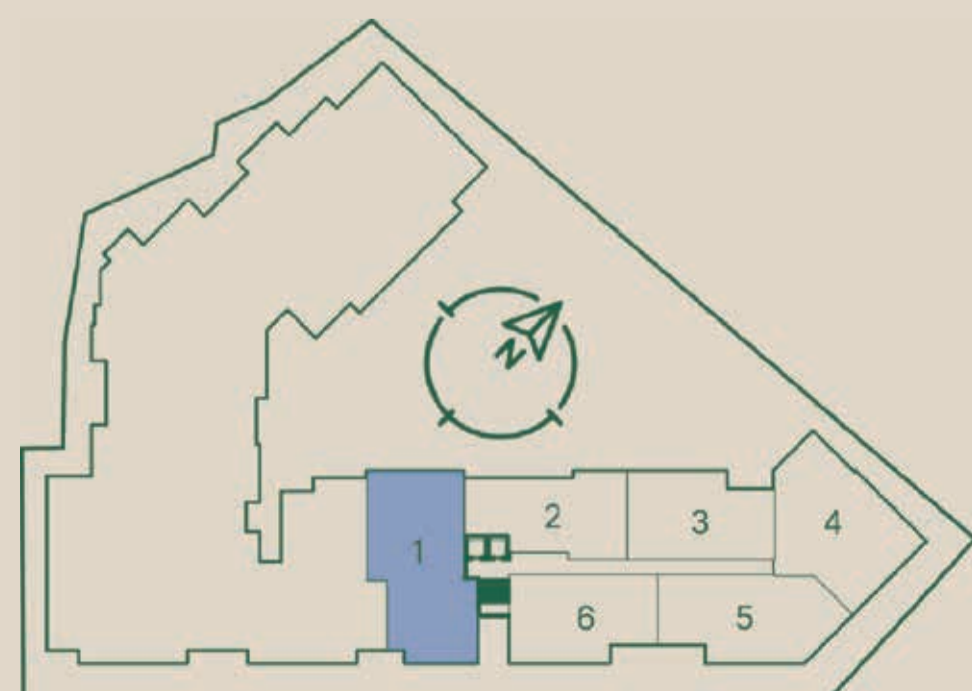
FINAL 6 - 93,75M²



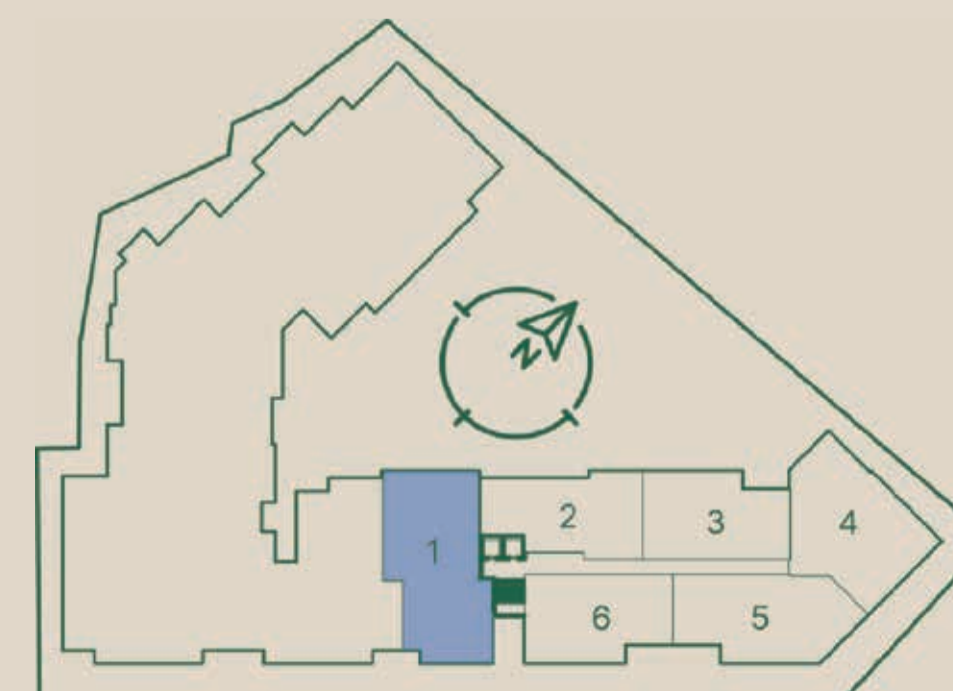
DUPLEX FINAL 1 - 267,70M²



DUPLEX INFERIOR



DUPLEX SUPERIOR



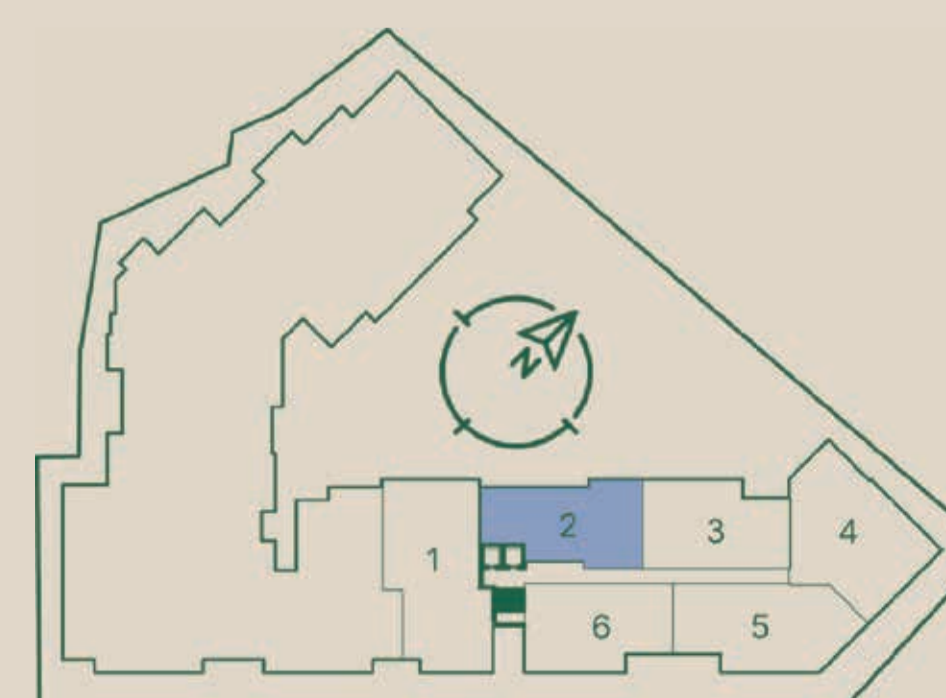
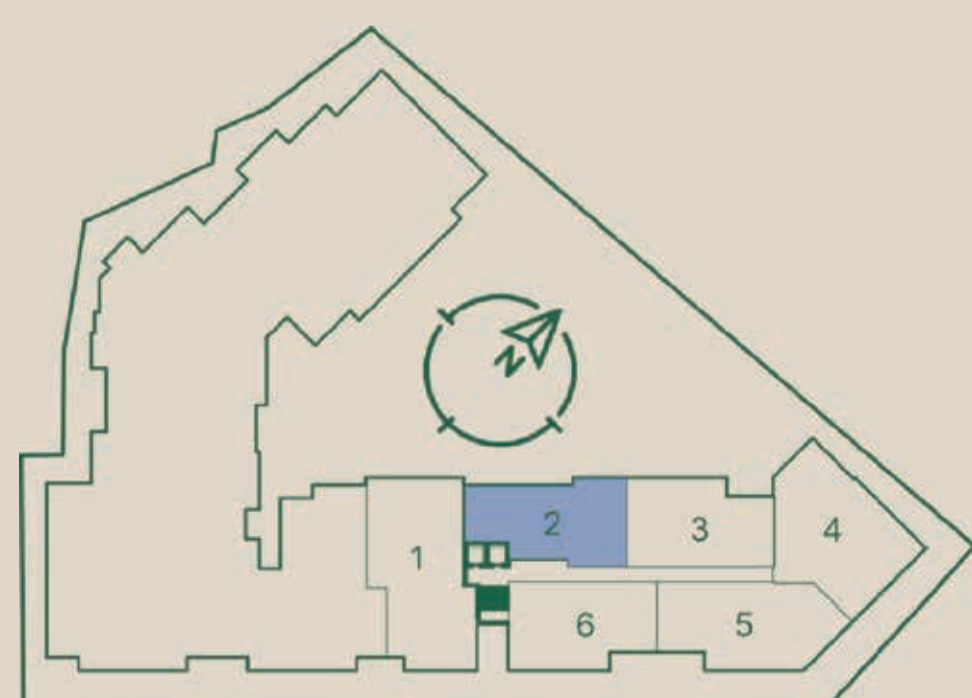
DUPLEX FINAL 2 - 181,60M²



DUPLEX INFERIOR



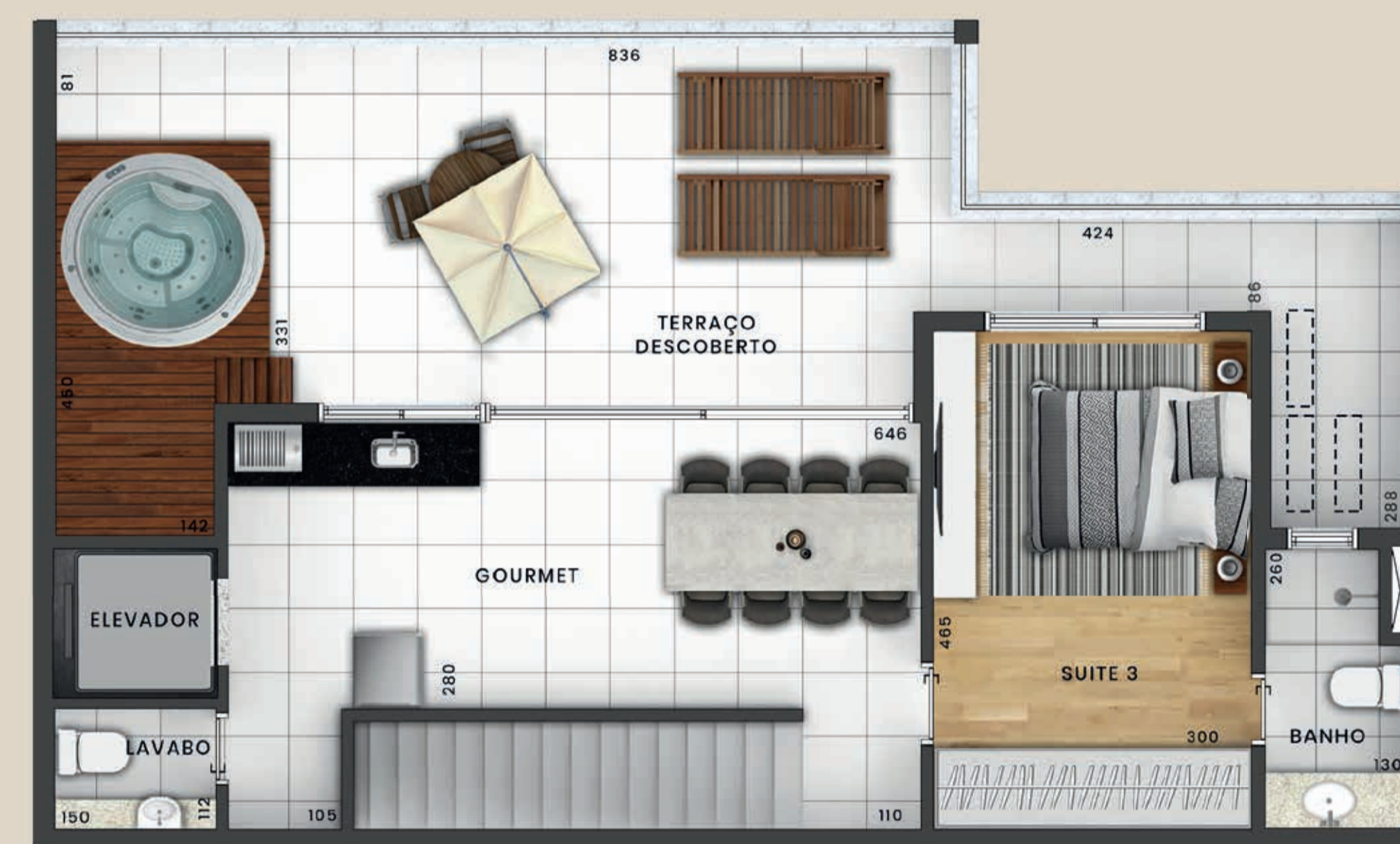
DUPLEX SUPERIOR



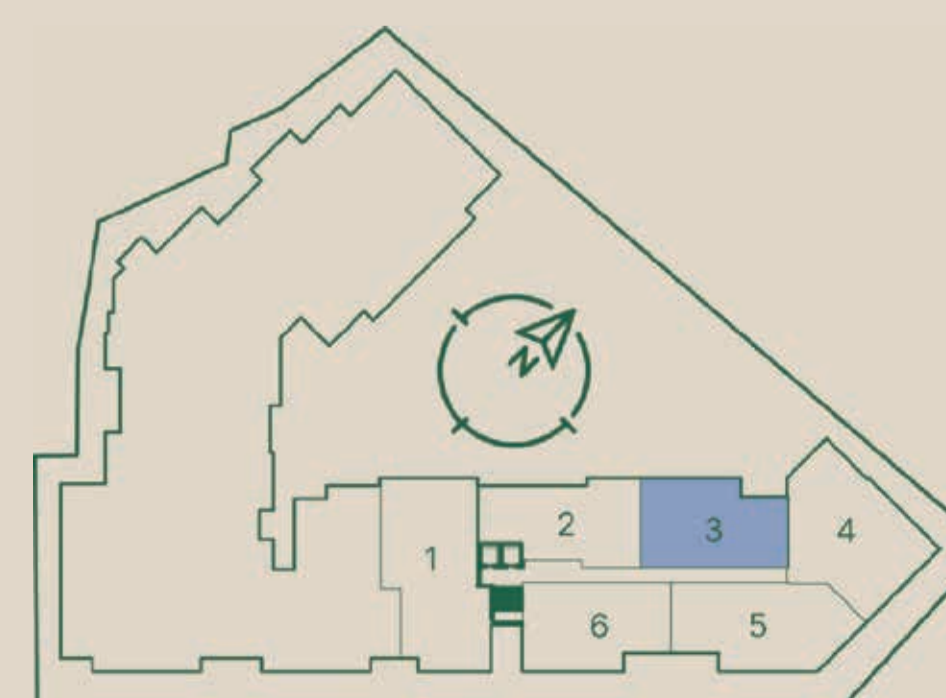
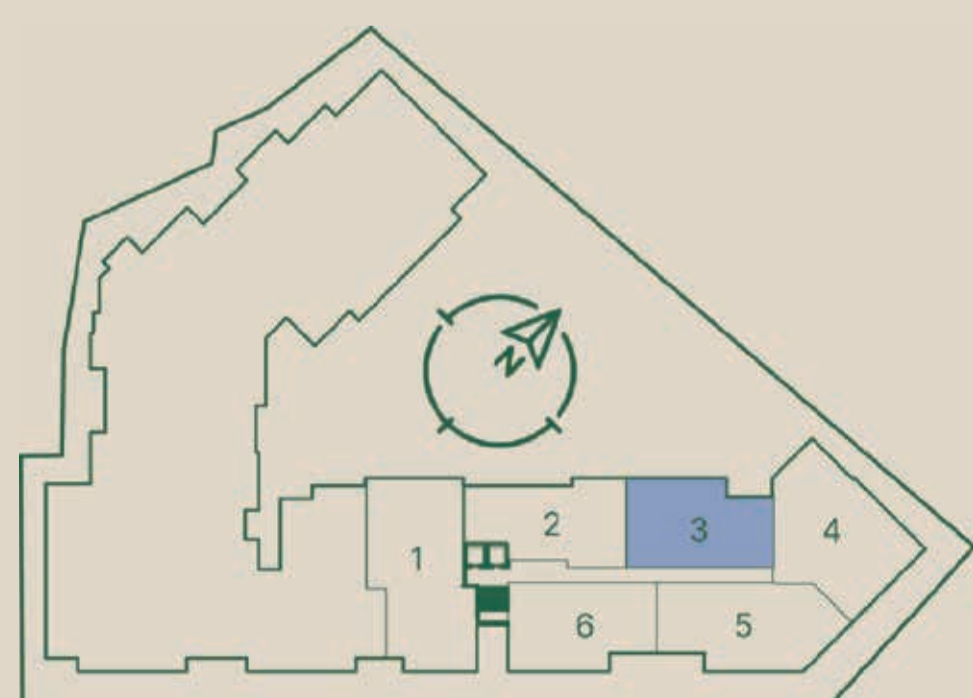
DUPLEX FINAL 3 - 179,85M²



DUPLEX INFERIOR



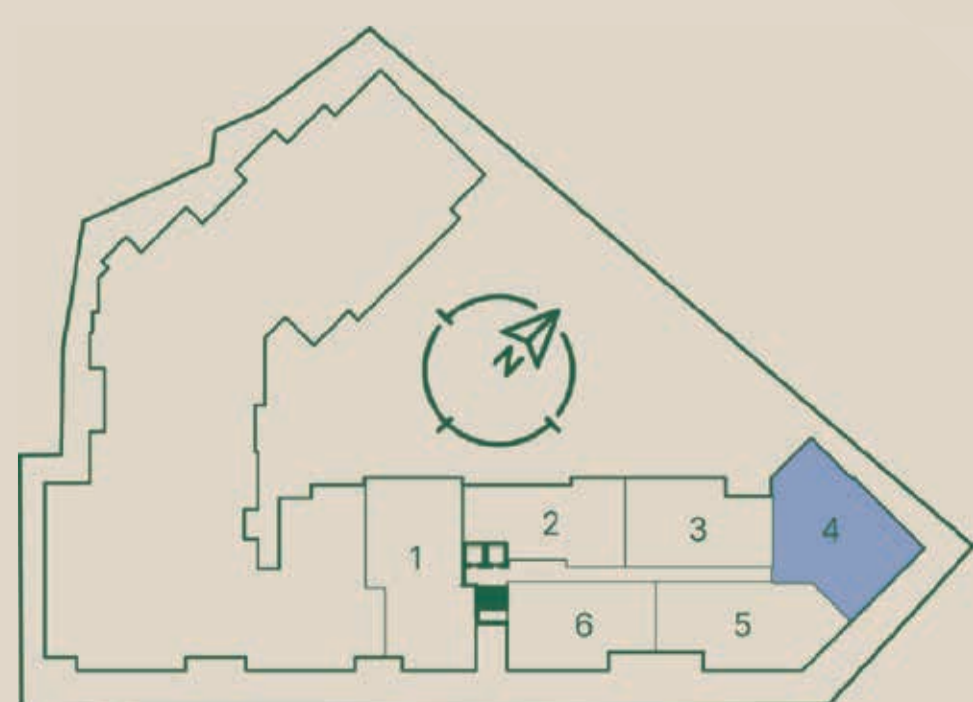
DUPLEX SUPERIOR



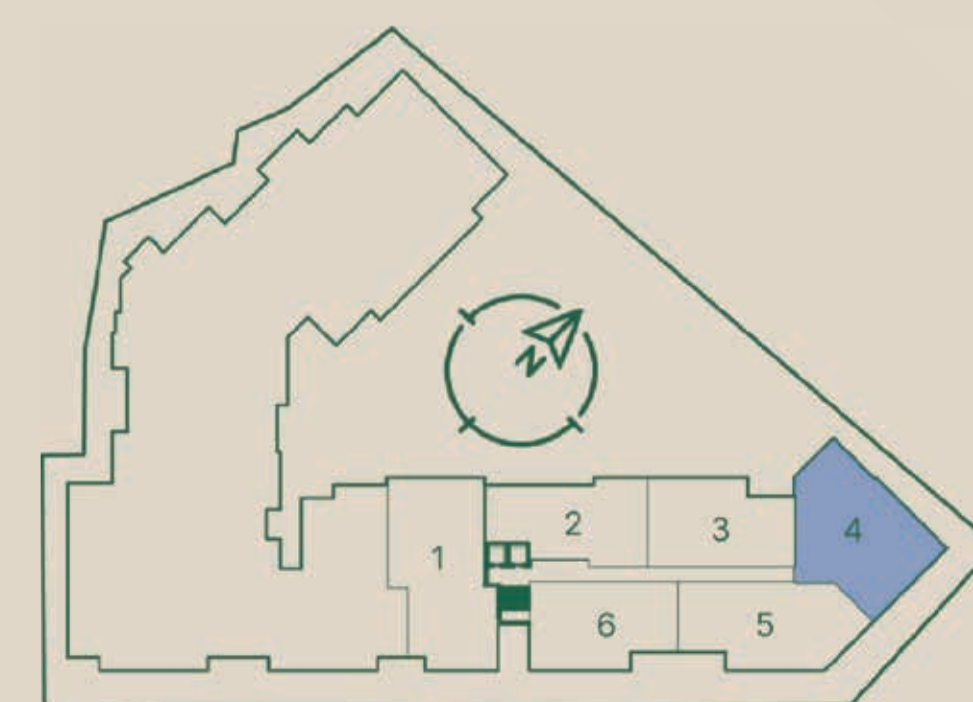
DUPLEX FINAL 4 - 242M²



DUPLEX INFERIOR



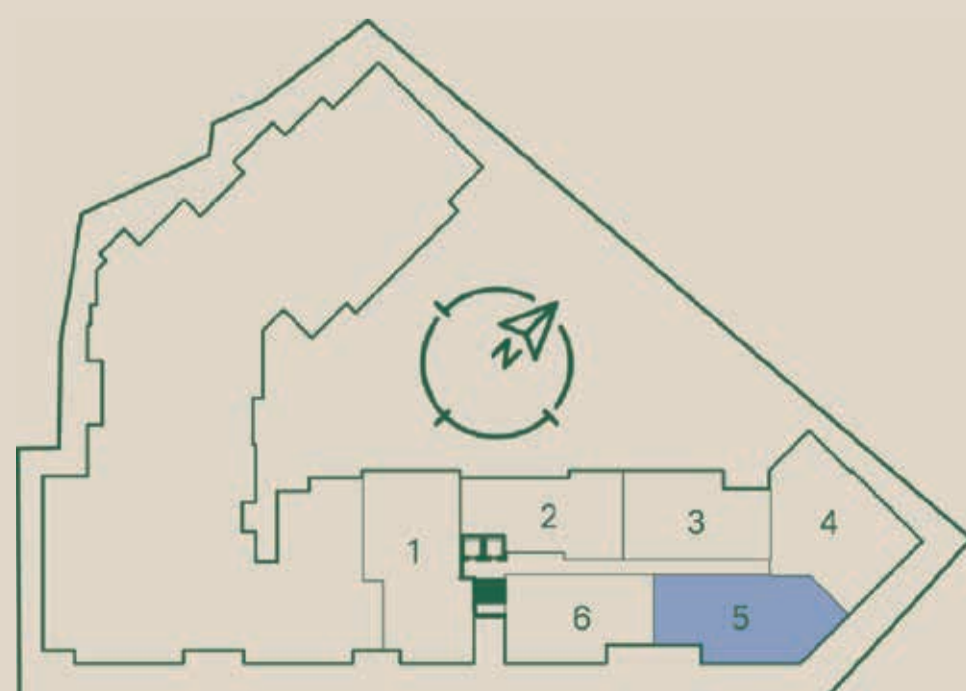
DUPLEX SUPERIOR



DUPLEX FINAL 5 - 212,75M²



DUPLEX INFERIOR



DUPLEX SUPERIOR



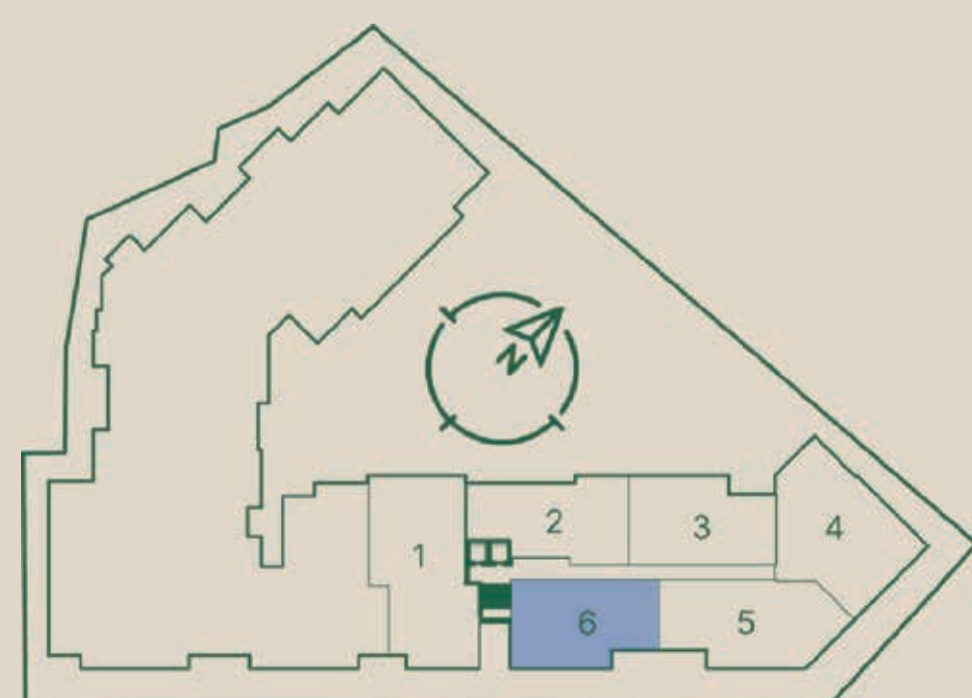
DUPLEX FINAL 6 - 181,75M²



DUPLEX INFERIOR



DUPLEX SUPERIOR



incorporação e construção

MUNIZ
INCORPORADORA

www.munizincorporadora.com.br

”As perspectivas e plantas são ilustrativas e possuem sugestão de decoração. Os móveis e utensílios são de dimensões comerciais e não fazem parte do contrato. Projeto aprovado pela SEPLAN da prefeitura de Poços de Caldas- MG em 22/03/2022. Alvará N° 161/2022 sob protocolo N° 0067258-048/2021 .Engenheiro responsável pela obra: Paulo Henrique Muniz Silva, CREA: 176435/D, ART N°: 20210003171. O empreendimento só será comercializado após o registro do memorial de incorporação junto ao cartório competente.”